

25th July '24 - Q1FY25 Earnings

Monitor PPAs (Power Purchase Agreements) - They provide stable revenue however growth or decline depends on the tariff. Next thing is to monitor the power generation capacity, capex related to it and the kind of energy generating sources the company builds or acquires. Also how well the company aligns its power generation portfolio with the government's capex targets.

Financial Highlights

- PAT grew by 80% YoY (Cash PAT up by 29% YoY)
- EBITDA increased by 21% YoY primarily on account of higher generation.
- 84% YoY increase in Net Profit driven by higher profitability in the thermal business and incremental contribution from renewable energy capacity additions. EBITDA Margins were at 49.2%
- However, revenue declined 1.7% YoY.

Updates regarding energy generation and energy portfolio.

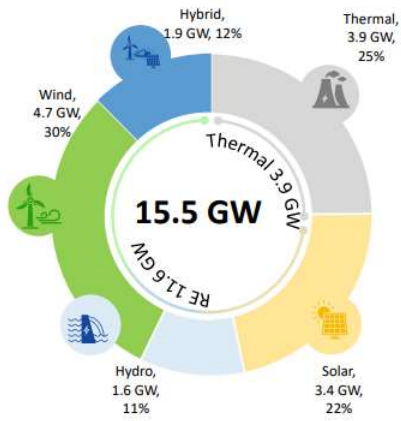
- Total locked-in energy generation capacity stood at 15.5 GW as of June 2024.
- Total Renewable energy generation increased by 44% to 3.2 billion units, driven by 61% YoY increase in hydro generation. Total Thermal generation up by 4% at 4.6 billion units. Net generation up by 18% to 7.9 billion units.
- Capacity addition of 291 MW done during the quarter including 45 MW of wind assets acquisition.
- Won RE bids having a cumulative capacity of 900 MW (600 MW hybrid project each & 300 MW solar)

JSW Energy – Presence Across the Value Chain



Well placed to achieve 10 GW of generation capacity ahead of stated timeline of 2025 with foray into New Age Businesses

Power Generation



Energy Storage

3.7 GWh of locked in capacity

Battery Storage
1.3 GWh



Hydro Pump Storage
2.4 GWh



Energy Products & Services

Solar Module & Green H2

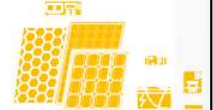


Green Hydrogen & Derivatives
3,800 TPA

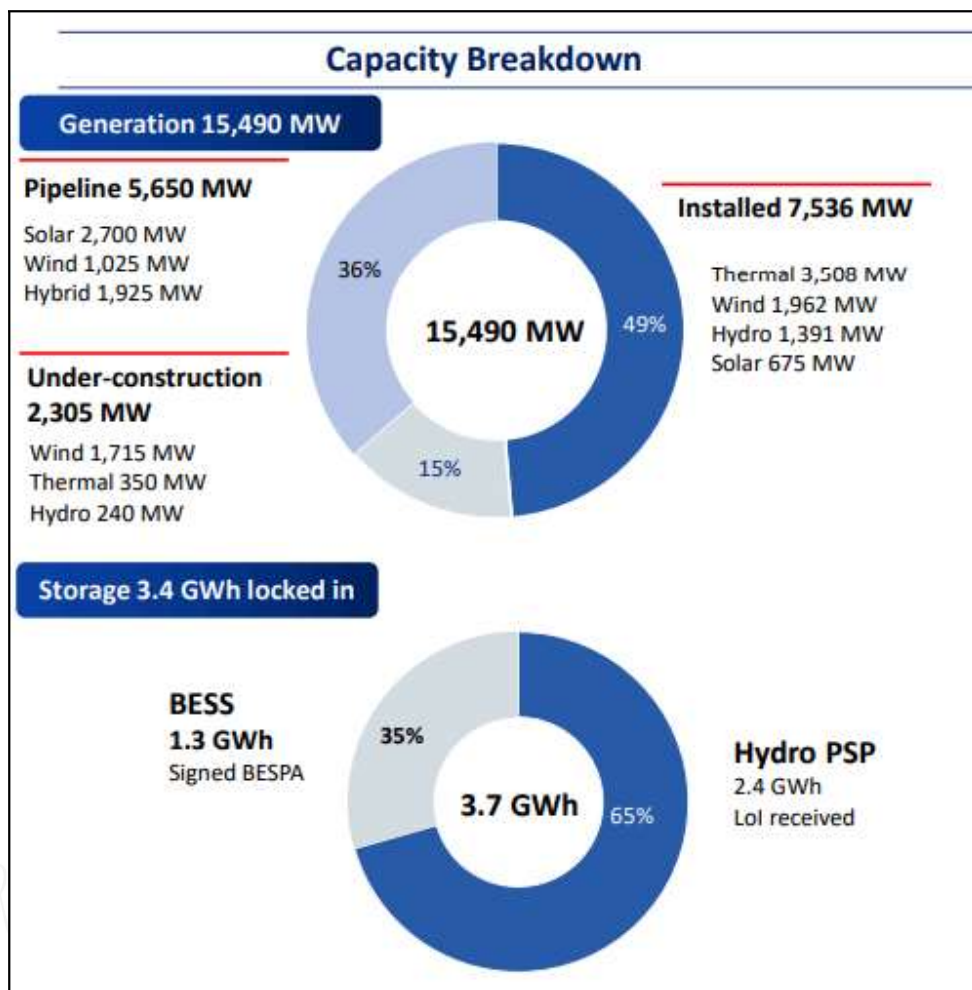
Wind Turbine
Manufacturing –
Technology licensing
agreement with SANY
Renewable Energy



Solar Module
manufacturing
1.0 GW



GURU SPAKES MARKETS - CHAITANYA SABHARWAL



Updates regarding PPAs


- Long term PPA generation up by 16% YoY. Signed PPA of 2025 MW of RE capacity including 1 GW from both solar & wind.

Updates regarding BESS

- Commenced construction of 1 GWh BESS project with expected commissioning by June 2025 (nearly a year).

Project Pipeline

- Project pipeline stands at 5650 MW with 2700 MW in the solar segment.

Pipeline Projects - 5,650 MW 



Project Type	Capacity (MW)	LoA/Lol	PPA Signed
SJVN	700	✓	✓ (CoD in 18-24 months)
GUVNL	300	✓	✓ (CoD in 18-24 months)
SECI XIII	700	✓	
NTPC	700	✓	
KREDL	300	✓	
Total Solar	2,700	2,700	1,000
SECI XVI	1,025	✓	✓ (CoD in 18-24 months)
Total Wind	1,025	1,025	1,025
SECI Hybrid VIII	300	✓	
Solar / Wind	220 / 100	✓	
SJVN Hybrid -II	300	✓	
Solar / Wind	220 / 100	✓	
Group Captive	1,325	✓	
Total Hybrid (Contracted/Installation)	1,925/1,965	1,925/1,965	
Total Pipeline	5,650	5,650	2,025

Segment Results

1. Thermal Assets

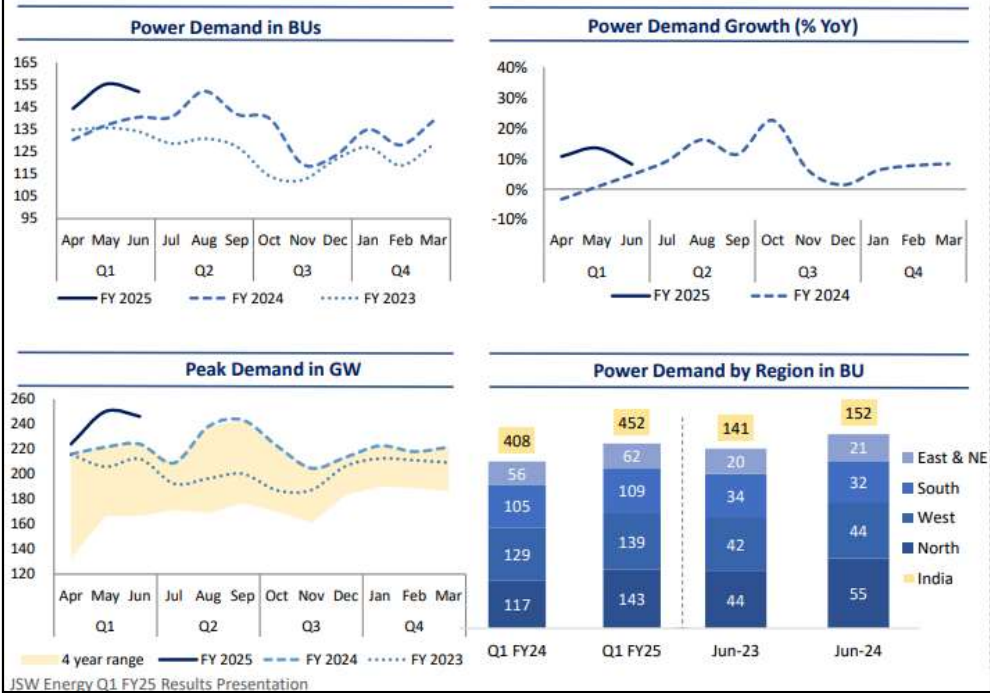
- a. Total operational capacity at 3.5 GW. Operating at 72% capacity.
- b. Revenue 8% down
- c. EBITDA 19% up and EBITDA margins at 33%

2. Renewable Assets (Presence across all modes of generation)

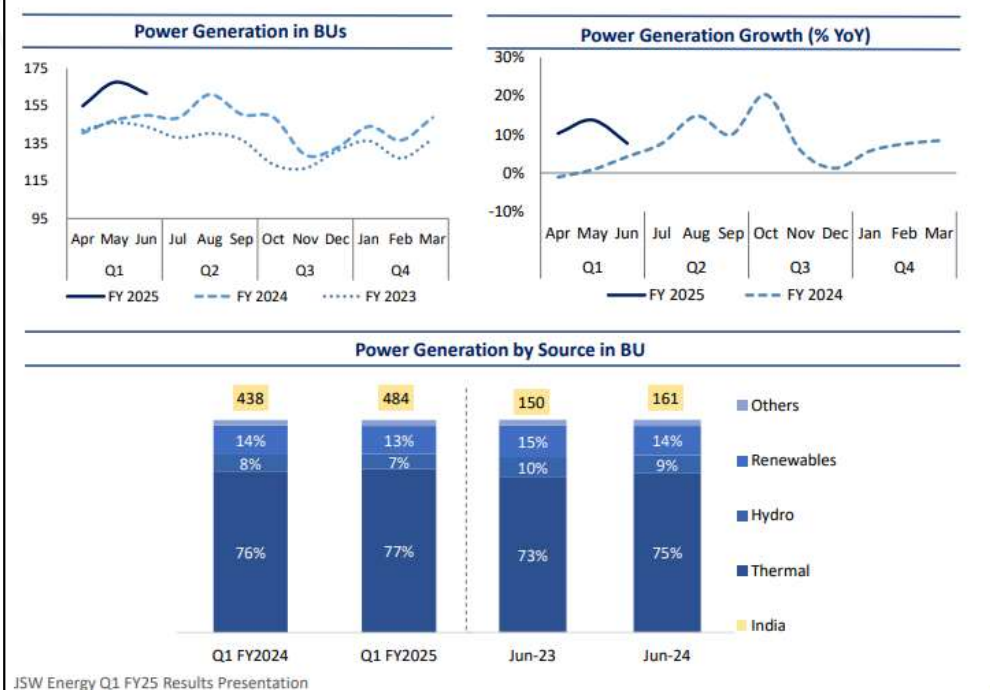
- a. Total operational capacity at 3.8 GW. Operating at 97% capacity.
- b. Installed green capacity up 15% YoY.
- c. Revenue up 17%
- d. EBITDA up 15%

Macroeconomic Outlook (Power demand vs Power Generation / Supply)

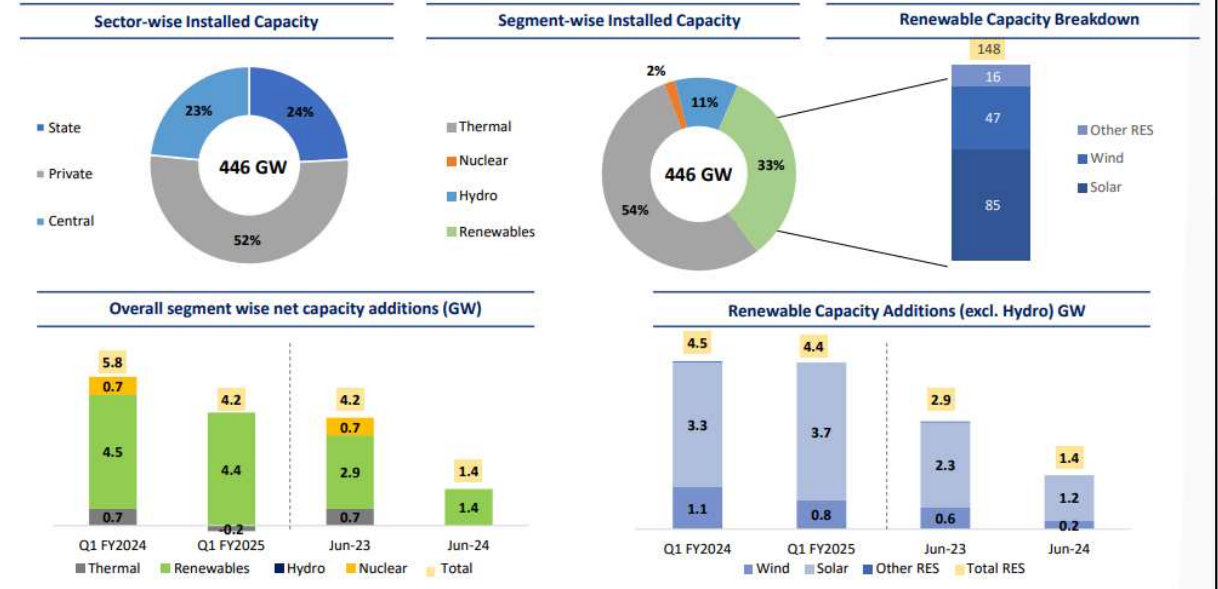
Power Demand increased by 11% in Q1 FY25



Overall Generation Increased by 11% YoY in Q1 FY25



India's installed capacity stands at 446 GW as on Jun 24



GURU SPAKES MARKETS - CHAITANYA SABHARWAL